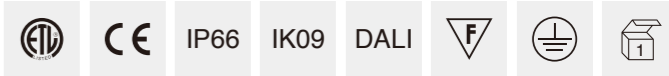


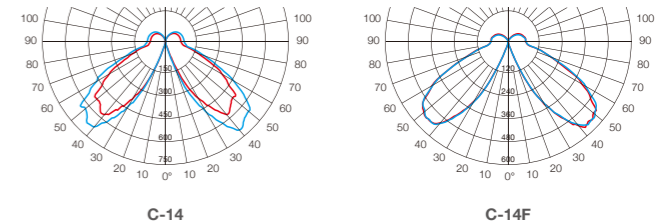


简述 Description



- 铝压铸盖帽，铝合金拉伸灯体，可根据需要截取不同高度
  - 高透明PC扩散罩，能有效防止发黄老化
  - 灯具采用间接投射发光模式，具有很好的视觉舒适性
  - 高性能LED芯片，驱动有0-10V / DALI / 编程电源选择
  - 防紫外线聚氨酯塑粉喷涂表面，耐腐蚀可以达1000小时以上
  - 灯具表面最高温度不超过50度，安全可靠
- Aluminum die casting cover, extruded aluminum body, it can be cut different height.
  - High transparent PC diffuser, it can effectively prevent yellowing and aging.
  - Indirect light luminaire for use with led, which has high visual comfort.
  - High quality LED chips, Driver with 0-10V/DALI/programmed options.
  - Surface anti-ultraviolet pure polyester powder painting, Corrosion resistance can be more than 1000 hours.
  - The maximum surface temperature of all accessible part under 50 degrees for safety and reliable.

配光曲线 Photometric Data



C-14  
25W

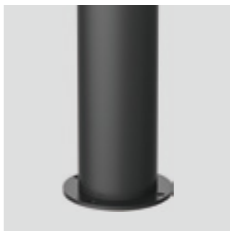
C-14F  
25W

技术参数 Technology data

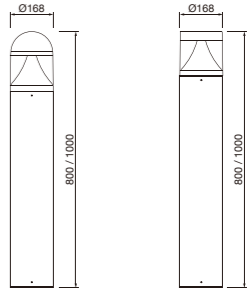
Code	Input voltage	Power	LED Qty	Weight	Packing Size
LED chips - 3030					
C-14LED25-132H80	100V-240V	25W	132	5.0	185*185*820
C-14LED25-132H100	100V-240V	25W	132	5.3	185*185*1020
LED chips - 3030					
C-14FLED25-132H80	100V-240V	25W	132	5.0	185*185*820
C-14FLED25-132H100	100V-240V	25W	132	5.3	185*185*1020

可选配件 Accessories

	Code
防水连接器 IP68 Connector	320000047
基础螺杆 Anchor Bolts	250000378
基础锚 Anchor	250000379



With Flange Version:  
C-14-A / C-14F-A



C-14 C-14F