

宁波金羽桥照明科技有限公司
NINGBO KING-BRIDGE LIGHTING
TECHNOLOGY CO.,LTD.

地址：浙江省余姚市阳明街道新桥工业区
Add: Xinqiao Industry Zone, Yangming Street, Yuyao City,
Zhejiang Province, China
Tel: +86-574-6256 6890
Fax: +86-574-6256 6827
info@kled.com

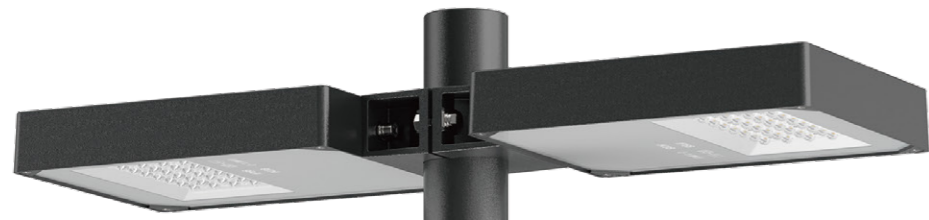
国内营销中心:

金羽桥照明科技（上海）有限公司
地址：上海市长宁区中山西路179号4K室
电话：189 1897 7928

KLED
— King-Bridge Lighting —

D-241 Series Street Lighting





D-241RD
80-200W



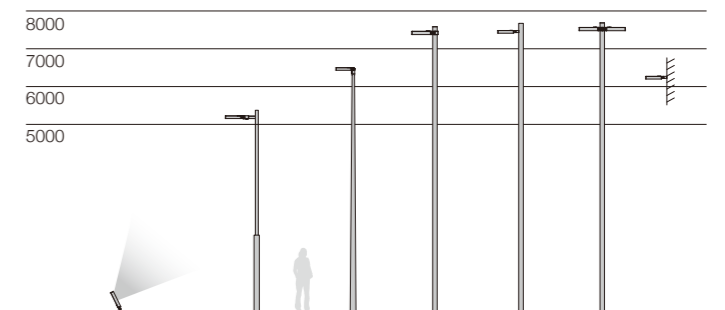
D-241R
40-100W



D-241T
40-100W



D-241
40-100W





D-241 Series



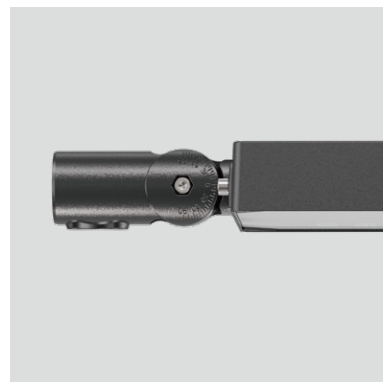
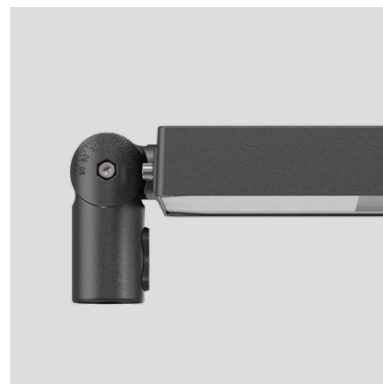
配有安装支架，可安装于墙壁或地面，角度可调，适配多种安装环境

Equipped with mounting bracket, can be installed on the wall or the ground, adjustable Angle, suitable for a variety of installation environment.



多种安装支架可选，可安装于方形灯柱或圆杆，角度可调，适配多种安装环境

A variety of optional mounting brackets, can be installed in a square lamp post or round pole, Angle adjustable, suitable for a variety of installation environment.



此款安装座有横装、竖装两种方式，角度可以-90~+90度调节，安装座有Ø48 / Ø60mm供选择

This installation seat has two ways of horizontal installation and vertical installation, the Angle can be adjusted by -90~+90 degrees, and the installation seat has Ø48 / Ø60mm for choice.



搭配NEMA或者ZHAGA底座，可实现道路智能远程控制

With the NEMA or ZHAGA base, intelligent remote control of the road can be achieved.



灯具配有钢化玻璃防护罩设计配置，IK08防护等级

The lamps are equipped with tempered glass protective cover design configuration, IK08 protection level.



D-241 Series

一款经济型LED路灯，功能齐全，造型简洁大方，具有卓越的视觉舒适性和安全性。灯具功率范围从40W-100W。

An economical LED street lamp, full of functions, simple and generous shape, with excellent visual comfort and safety. Lamp power range from 40W to 100W.



玻璃丝印颜色可选：黑色

Glass screen printing color Optional: black.



玻璃丝印颜色可选：灰色

Glass screen printing color Optional: gray.

简述 Description

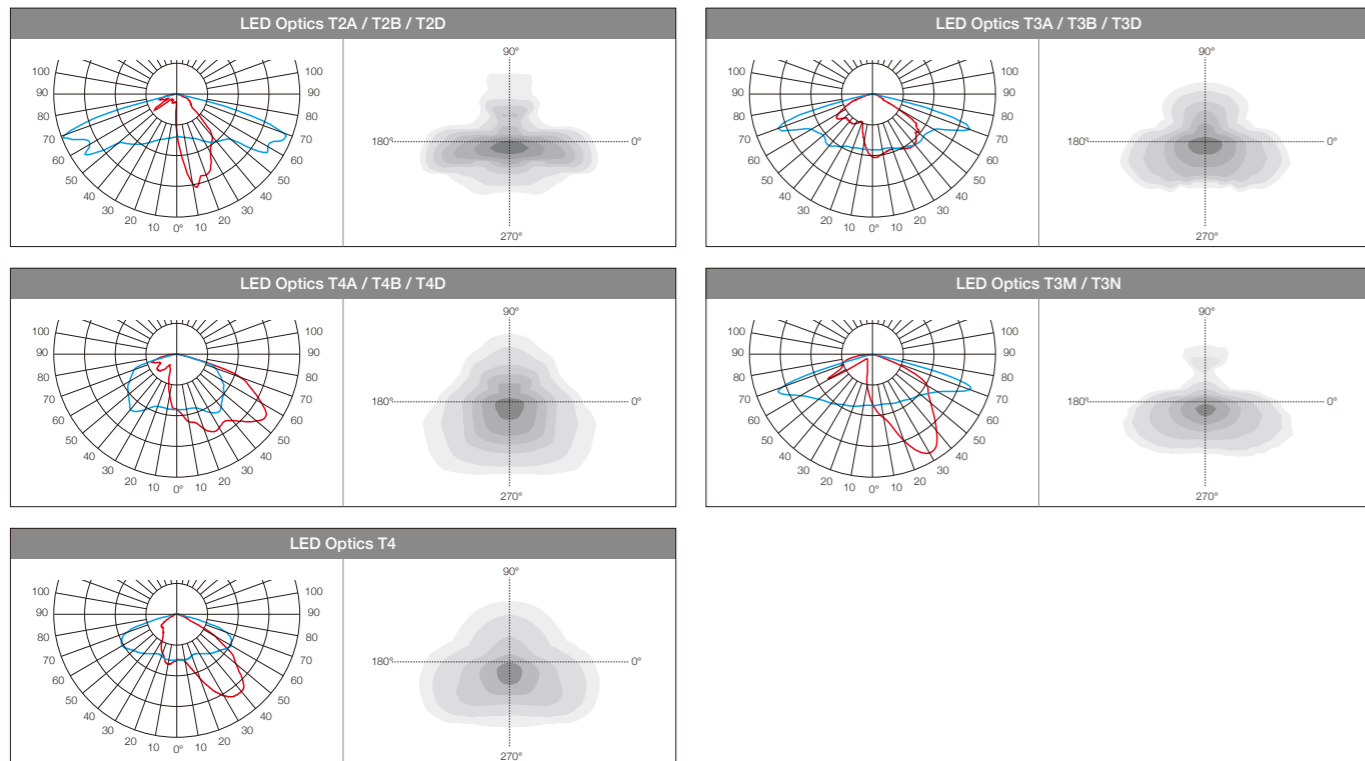


- 铝压铸灯体外壳，超白钢化玻璃
- 高透光PC透镜，具有高视觉舒适性和均匀配光透镜，供多种不同配光选择
- 高性能LED芯片，驱动有0-10V / DALI / 编程电源选择，20KV浪涌保护器
- 有圆杆、方杆、抱箍和壁装4种安装方式，角度可调，安装管径有 $\varnothing 48$ / $\varnothing 60$ mm / $\varnothing 89$ mm
- 防紫外线聚氨酯粉末喷涂表面，盐雾测试可达1000小时以上
- 无生物蓝光危害风险，符合EN62471: 2008标准
- 道路灯智能远程控制系统可选，可以与远程管理系统兼容
- 所有外部螺钉均为304不锈钢材质

- Die-casting aluminium body, super white tempered glass.
- Optics with PC lens with high visual comfortable and uniform lighting distribution, multiple light distribution options.
- High quality LED chips, Driver with 0-10V/DALI/programmed be options, and with surge protection up to 20KV.
- There are four installation methods: round rod, square rod, hoop and wall mounting, the Angle is adjustable, and the installation pipe diameter is $\varnothing 48$ / $\varnothing 60$ mm / $\varnothing 89$ mm.
- Surface anti-ultraviolet pure polyester powder painting, Corrosion resistance can be more than 1000 hours.
- No photo-biological risk, (no risk linked to infrared, blue light and UV radiation) in accordance with EN 62471:2008.
- Street lighting control used with smart control technology. It can be compatible with remote management system.
- All external screw are in 304 stainless steel.



应用透镜 Optics application





D-241 Series

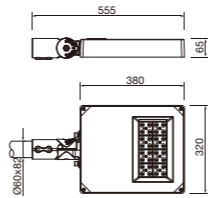


技术参数 Technology data



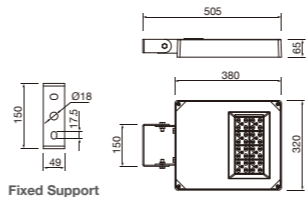
D-241

Code	Power	LED Qty	Optics	Packing Size	Weight	Pcs/20"	Pcs/40"
LED chips - 3535/5050							
D-241LED40-24	40W	24	T2A/T3A/T4A/T3M/T4	575*335*110	7.7	1120	2350
D-241LED60-24	60W	24	T2A/T3A/T4A/T3M/T4	575*335*110	7.7	1120	2350
D-241LED75-32	75W	32	T2A/T3A/T4A/T3M/T4	575*335*110	7.7	1120	2350
D-241LED100-48	100W	48	T2D/T3D/T4D/T3N	575*335*110	7.7	1120	2350



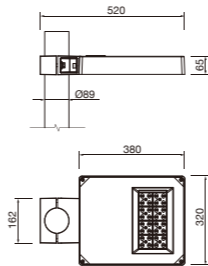
D-241T

Code	Power	LED Qty	Optics	Packing Size	Weight	Pcs/20"	Pcs/40"
LED chips - 3535/5050							
D-241TLED40-24	40W	24	T2A/T3A/T4A/T3M/T4	525*335*100	8.3	1350	2850
D-241TLED60-24	60W	24	T2A/T3A/T4A/T3M/T4	525*335*100	8.3	1350	2850
D-241TLED75-32	75W	32	T2A/T3A/T4A/T3M/T4	525*335*100	8.3	1350	2850
D-241TLED100-48	100W	48	T2D/T3D/T4D/T3N	525*335*100	8.3	1350	2850



D-241R

Code	Power	LED Qty	Optics	Packing Size	Weight	Pcs/20"	Pcs/40"
LED chips - 3535/5050							
D-241RLED40-24	40W	24	T2A/T3A/T4A/T3M/T4	540*335*100	8.4	1250	2650
D-241RLED60-24	60W	24	T2A/T3A/T4A/T3M/T4	540*335*100	8.4	1250	2650
D-241RLED75-32	75W	32	T2A/T3A/T4A/T3M/T4	540*335*100	8.4	1250	2650
D-241RLED100-48	100W	48	T2D/T3D/T4D/T3N	540*335*100	8.4	1250	2650



可选配件 Accessories options

	Code
圆灯杆抱箍1 Pole Hoop-1	210008836
圆灯杆抱箍2 Pole Hoop-2	210008837
方杆支架组件 Square rod support	220005095
Ø60-48转换套 Adapter Arm / Adapter required for install on the pole.	210002547